

A close-up photograph of a printer's printhead assembly, showing multiple blue ink cartridges and their corresponding nozzles. The assembly is mounted on a metal frame.

# Installation User Manual

---

\*This installation manual is for models: double-printheads inkjet printer, multi-printheads inkjet printer, uneven surface printer and egg printing inkjet printer.

---

## IMPORTANT

To ensure the best printing quality, we recommend using only our specified cartridges and the corresponding accessories. Any malfunction or poor printing quality caused by improper use of other kinds of inks or accessories will be not be guaranteed.

### Safety Precautions

There is high voltage inside the machine when it is live. Maintenance or disassembly by unqualified or unauthorized person is strictly prohibited, so as not to cause any accident.


Machine must be reliably grounded by connecting the grounding wire for the machine during equipment setup. Unreliable grounding will result in machine failure that the machine cannot work normally.


Do not expose ink to direct sunlight or high temperature (35°C above). The heat of direct sunlight or high temperature will affect ink's storage life and print quality.

If you get ink spill on the eyes or skin during use, please clean your eyes or skin by clean water.

Ink leakage inside printer can result in burnout damage to the machine. Switch off the machine and unplug it from power outlet when there's ink leakage inside printer. Contact qualified service technician for test and repair.

### Warning Signs

**Caution:** The sign “” indicates information for caution of possible damage to hardware of inkjet printer or data loss.

**Attention:** The sign “” indicates important notes helpful for your trouble-free operation of the machine.

---

# Content

04	Introduction
05	Important Precautions for Using
06	<b>Chapter 1: Double-printheads Inkjet Printer Installation Manual</b>
07	1.1 Printheads Adjustment
07	1.2 Single Printhead Installation
08	1.3 Double Printheads Installation
09	1.4: Anti-Shock Mechanism & Plate (Optional)
10	1.5 Bracket Installation
11	<b>Chapter 2: Multi-printheads Inkjet Printer Installation Manual</b>
12	2.1 Aviation Connector Adjustment
12	2.2 Single Printhead Installation
13	2.3 Combined Printheads Installation
14	2.4 Combined Printheads Installation on Production Line (Optional)
16	<b>Chapter 3: Uneven Surface Printing Inkjet Printer Installation Manual</b>
17	3.1 Printhead Introduction
17	3.2 Printheads Adjustment
18	3.3 Pole Holder Adjustment for side/down printing
18	3.4 Set up printer, deflector, and anti-shock mechanism
19	3.5 Bracket Installation

---

# Content

20	<a href="#">Chapter4: Egg Printing Inkjet Printer Installation Manual</a>
21	4.1 Printhead Introduction
21	4.2 Printhead Adjustment Module Installation
22	4.3 Bracket Installation
23	<a href="#">Chapter 5: Main Unit Introduction</a>
24	5.1 Double printheads Printer
25	5.2 Controller introduction of the multi-printheads printer
26	5.3 Technical Specifications

---

## Important Precautions for Using

Welcome to use this Printer. In order to protect your personal safety and user rights, ensure correct installation and operation, and full play of the machine, it is important that you read the precautions carefully.



### Important Setup Precautions

- \* Use exclusive power supply for the equipment. Do not share same power supply with other equipment. Besides, Installation of an additional UPS is recommended.
- \* Mount the support in sound and stable place. Do not choose the location that will be easily affected by shock or sway.
- \* Choose well-working conveyor belt for high print quality.
- \* Add deflector to the printer for production line setup in order to prevent any printing object hitting the nozzle plate to cause damage.
- \* Make sure the printer is well grounded.
- \* Maintain the distance between deflector and printing object at 0.5-2.5mm as recommended.
- \* Make sure to insert and remove the ink cartridge by an angle of 15 degree so as not to cause damage to the cartridge.
- \* Make sure the setup environment is tidy and clean. Clean the dust on printer from time to time when dusty environment is unavoidable.

Please read this user manual carefully before first use of the printer for full understanding and attention of important information so that you will get maximum use from your new equipment. This will also help you have a quick reference to related sections when you have any problems during use.

**Note 1:** If you cannot solve the problem encountered during use, please contact us for assistance.

**Note 2:** The information contained herein is subject to change without notice. The amended information will be updated in user manual by new edition.

**Note 3:** Any machine failure or damage caused by user's negligence in following this manual will not be covered by the warranty.

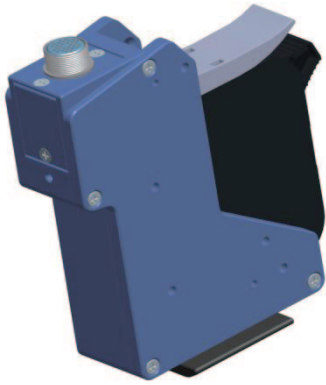
# **Chapter 1:**

## **Double-printheads Inkjet Printer Installation Manual**

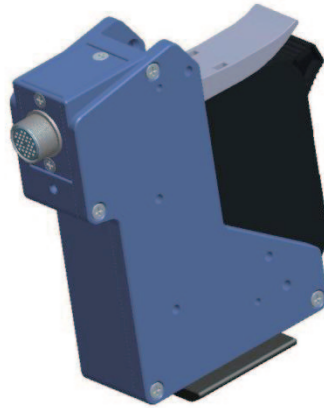


---

## 1.1 Printheads Adjustment

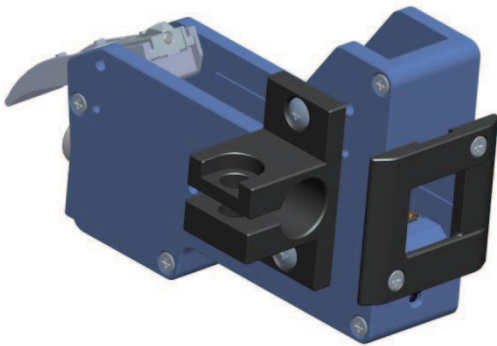


Aviation connector default status  
Note: for easy operation, installation direction can be adjusted.

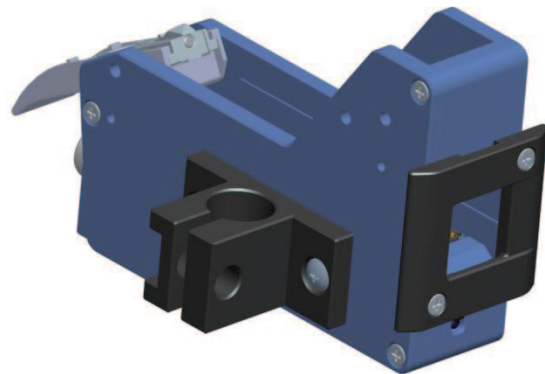


Remove the 3 screws on the connector, take off the plate, place it into another direction as shown on the picture, then fasten the screws back.  
Connector Adjustment Finish

## 1.2 Single Printhead Installation

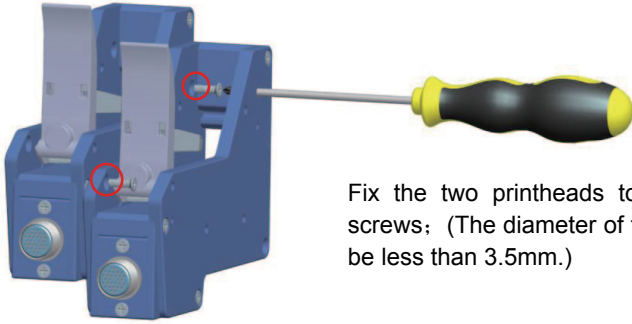


Single Printhead for Side Printing

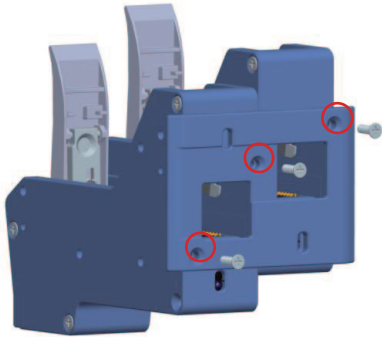


Single Printhead for Down Printing.

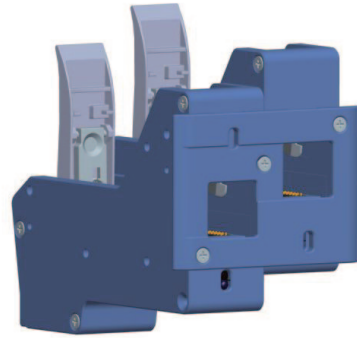
## 1.3 Double Printheads Installation



Fix the two printheads together by 2pcs M3\*10 screws; (The diameter of the screwdriver needs to be less than 3.5mm.)



Fasten the anti-shock plate on the printheads by 3pcs M3\*10 screws.



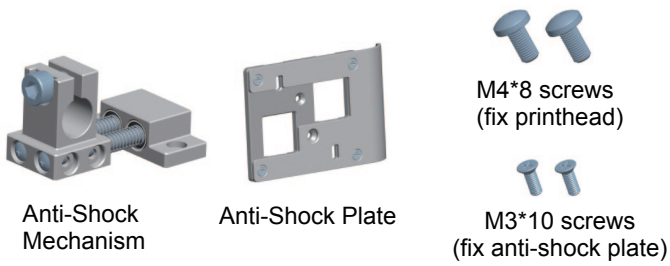
Double printheads installation finish.  
Note: While install anti-shock plate, its direction can be adjusted according to production line direction.



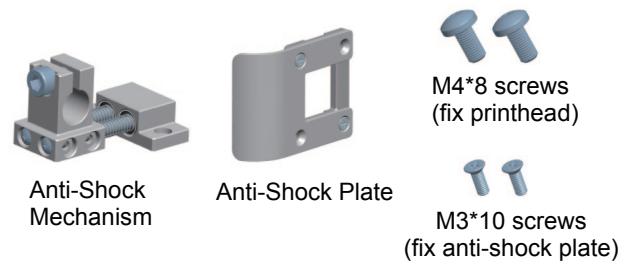
## 1.4: Anti-Shock Mechanism & Plate (Optional)

Note: The anti-shock mechanism and plate is optional, according to demand.

### Part List

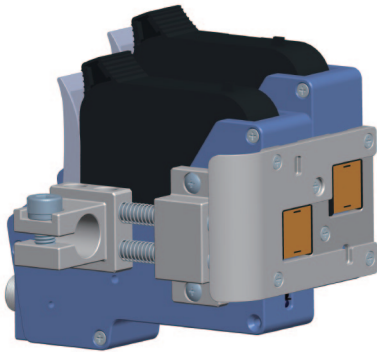


### Combined Printheads

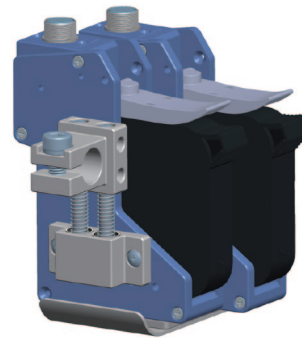


### Single Printhead

### Installation



Combined printheads side printing  
Note: The installation direction can be adjusted.



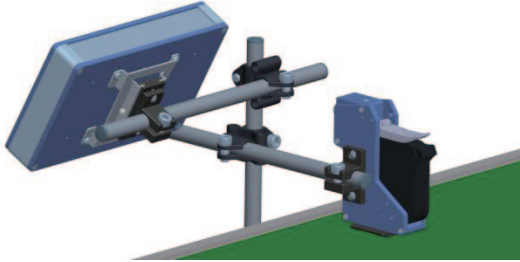
Combined printheads downward printing  
Note: The installation direction can be adjusted.

Note: Installation for single printhead is the same as combined printheads.

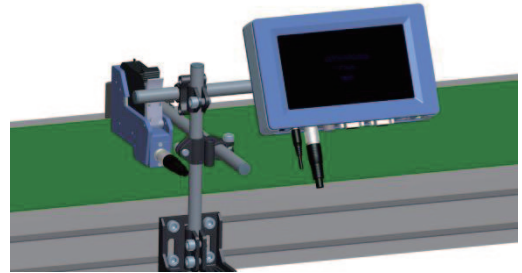
## 1.5 Bracket Installation

Installation details, please refer to the installation video in the USB disk.

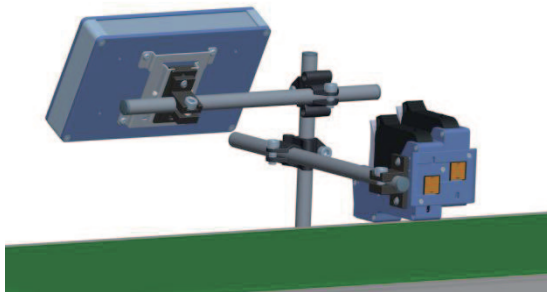
**Down Printing of Single Printhead**



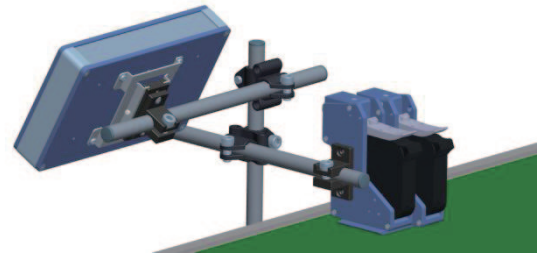
**Side Printing of Single Printhead**



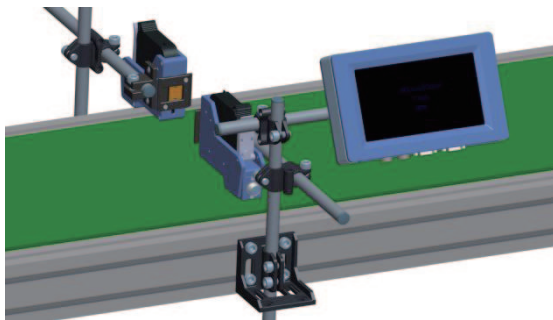
**Side Printing of Double Printheads**



**Down Printing of Double Printheads**



**Separate Printheads Installation**



---

## Chapter 2

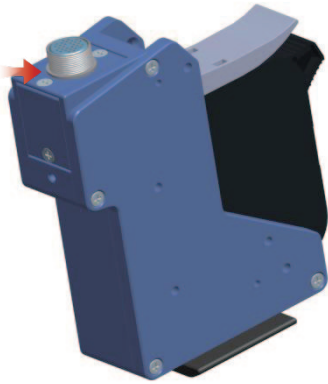
### *Multi-printheads Inkjet Printer Installatin Manual*



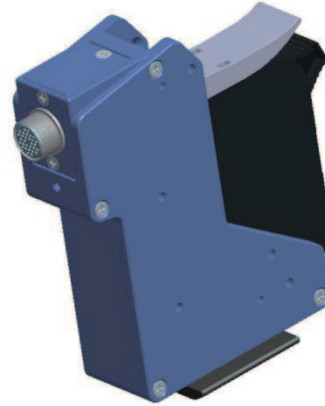
\*If the printheads need to be separated, please refer to the installation instruction for double-printheads inkjet printer

---

## 2.1 Aviation Connector Adjustment

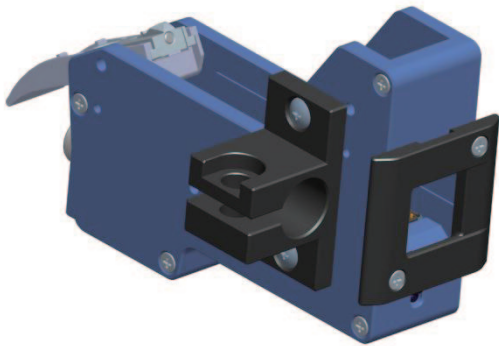


Aviation connector default status  
Note: for easy operation, installation direction can be adjusted.

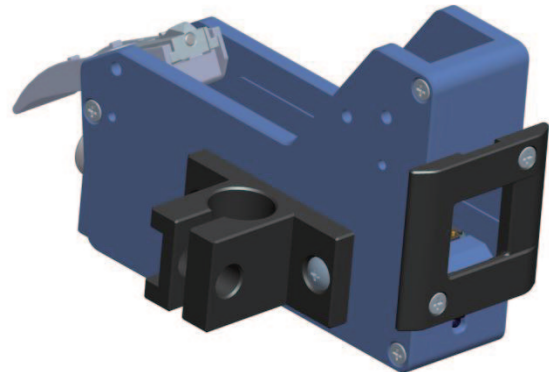


Remove the 3 screws on the connector, take off the plate, place it into another direction as shown in the picture, then fasten the screws back.  
Connector Adjustment Finish

## 2.2 Single Printhead Installation

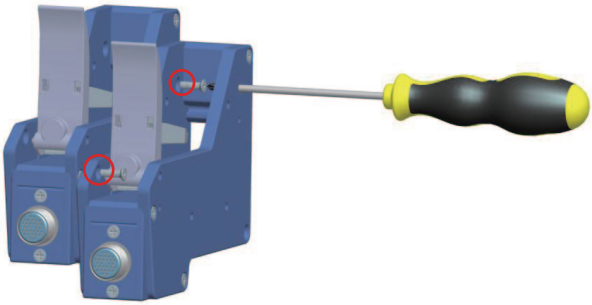


Single Printhead for Side Printing

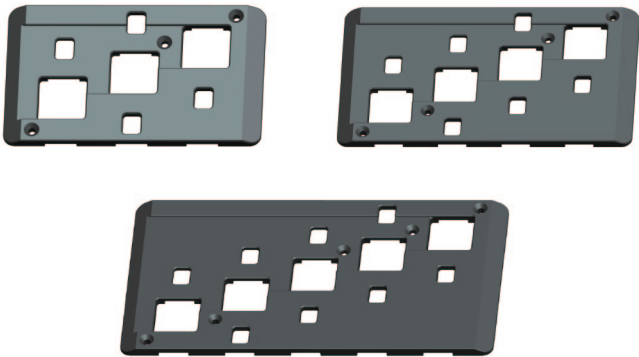


Single Printhead for Down Printing

## 2.3 Combined Printheads Installation

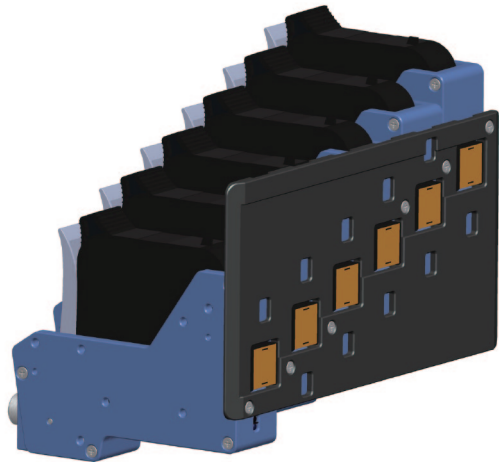


Fix the two printheads together by 2pcs M3\*10 screws ; (The diameter of the screwdriver needs to be less than 3.5mm.)  
Use the same way to combine with other printhead(s).



Anti-Shock Plate

We will equip the different anti-shock plate according to the printheads number user ordered.



Combined Printheads

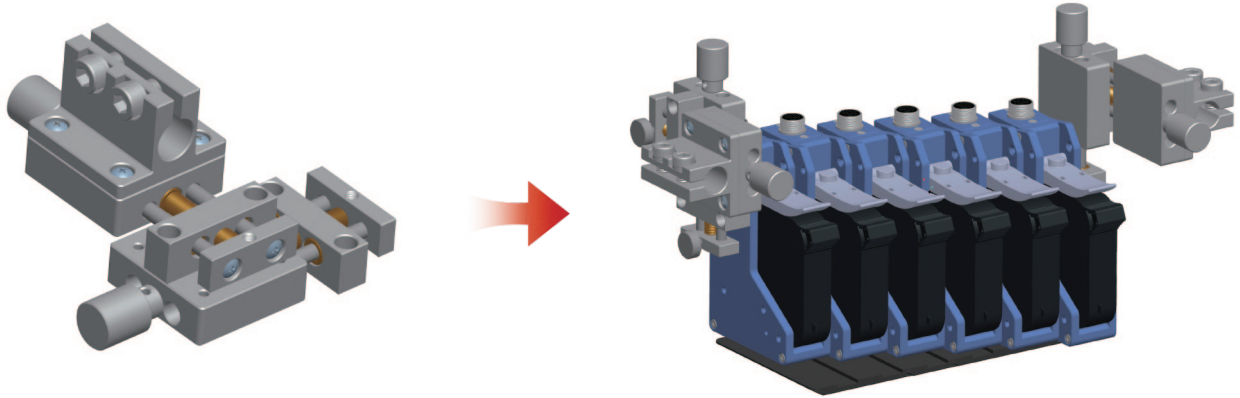


## 2.4 Combined Printheads Installation on Production Line (Optional)

The installation brackets are optional parts, user can order the different installation bracket according to different installation ways.

### Installation for Down Printing

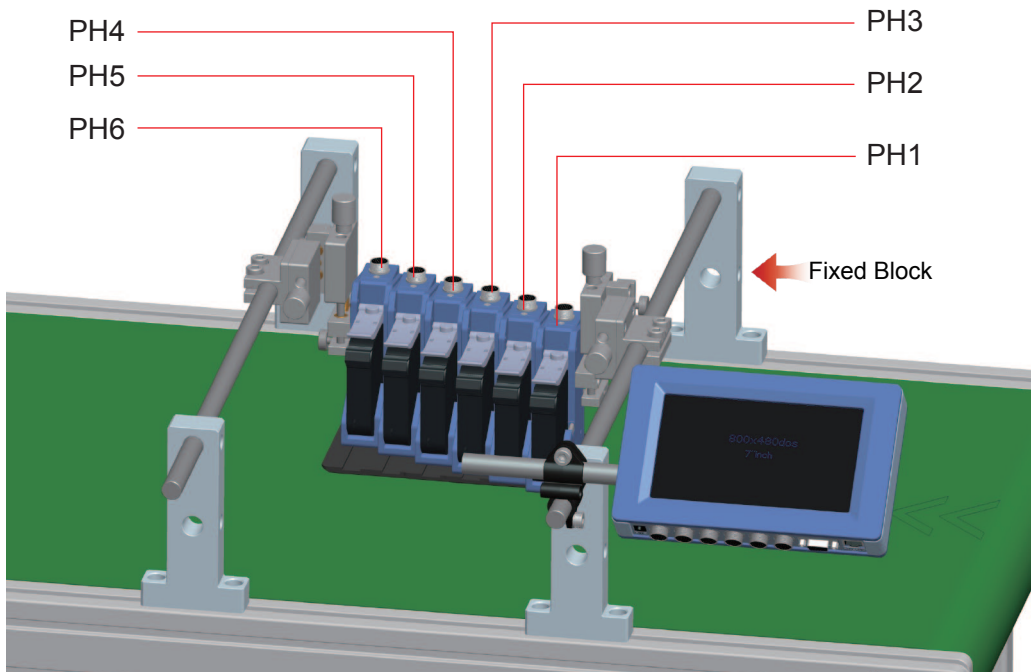
1. After combined the printheads and assemble the anti-shock plate, fix the adjustment modules onto the both sides of the printheads (as in below picture):



Two adjustment module cross combination

Note: the adjustment module can adjust the printhead with vertical or horizontal position, adjustment scope is 0~25mm, can adjust the printhead on the same horizontal line.

2. After the adjustment modules installed, fix the printheads onto the production line:



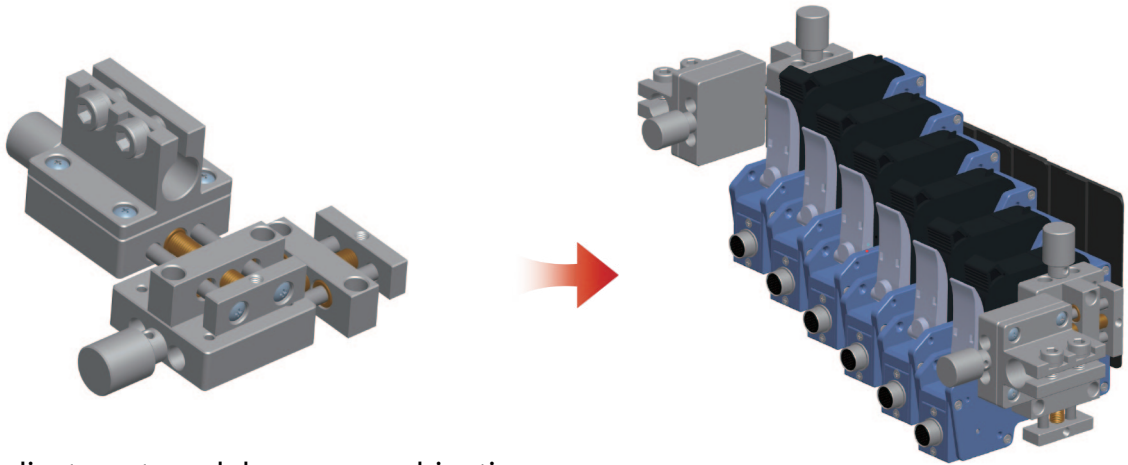
Note: 1) Use the gradienter to adjust the position, to make them in the same level.

2) User need to prepare two bars length according to the production line's width, bar diameter need to be 16mm.

3) User may prepare themselves or order customized fixed block according to the object's height.

## Installation for Side Printing

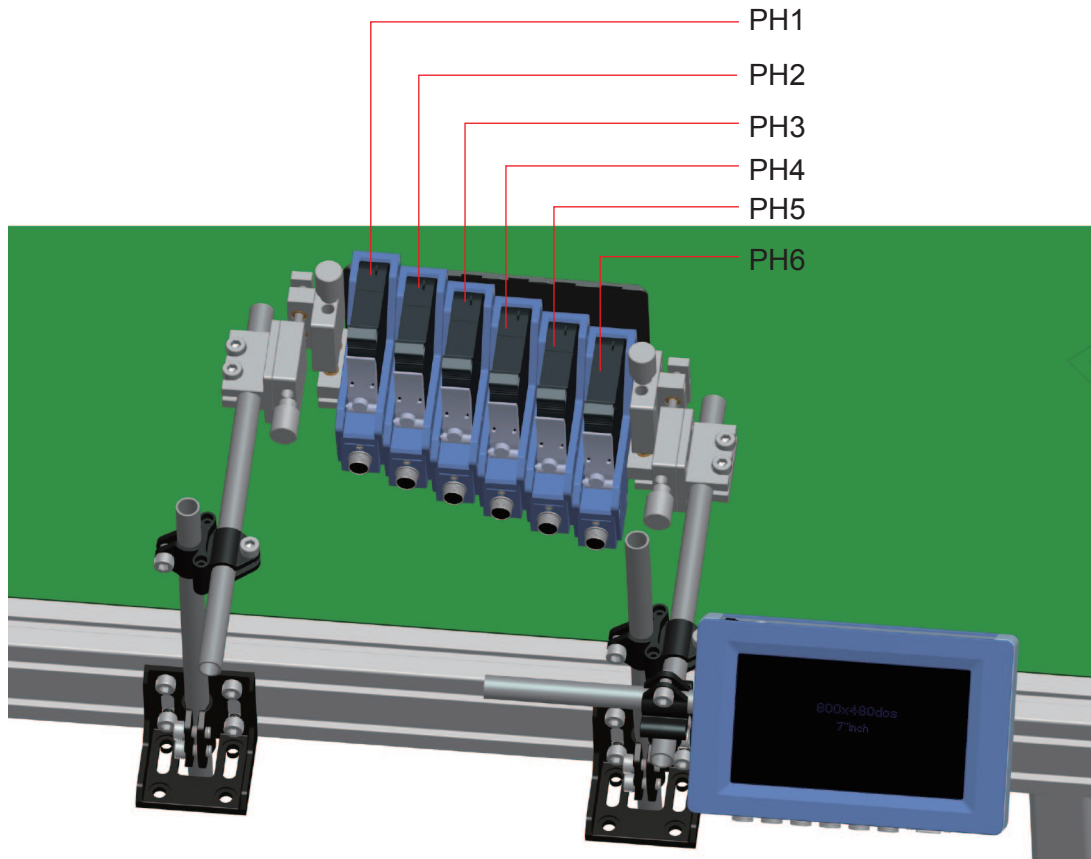
1. After combined the printheads and assemble the anti-shock plate, fix the adjustment modules onto the both sides of the printheads (as in below picture):



Two adjustment module cross combination

Note: the adjustment module can adjust the printhead with vertical or horizontal position, adjustment scope is 0~25mm, can adjust the printhead on the same horizontal line.

2. After the adjustment modules installed, fix the printheads onto the production line:

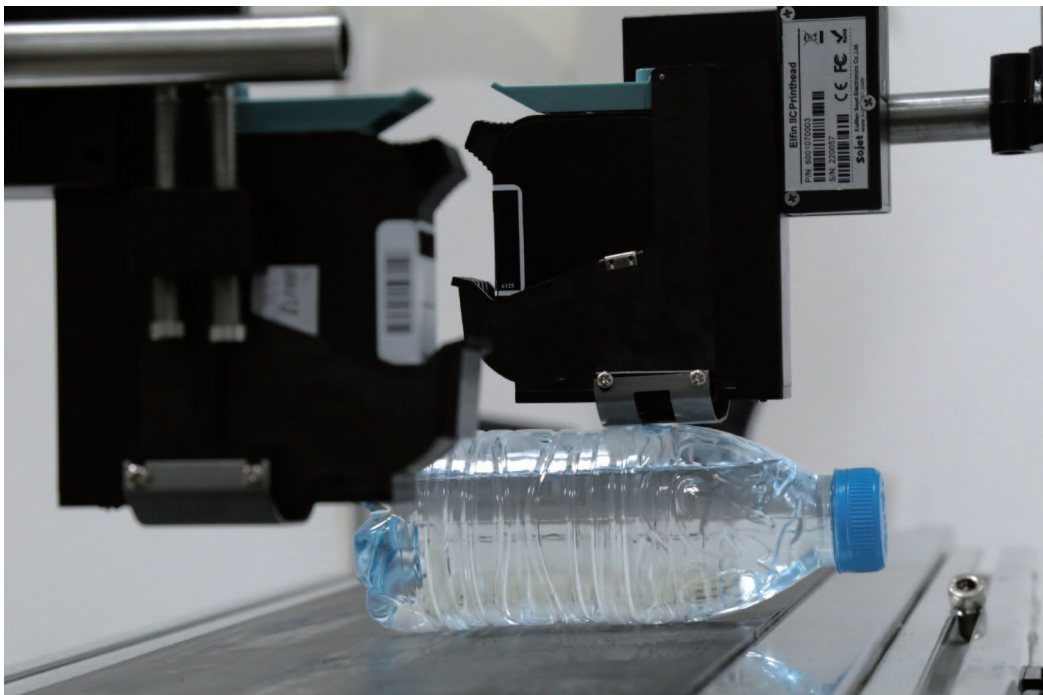


Note: Use the gradienter to adjust the position, to make them in the same level.

---

## Chapter 3

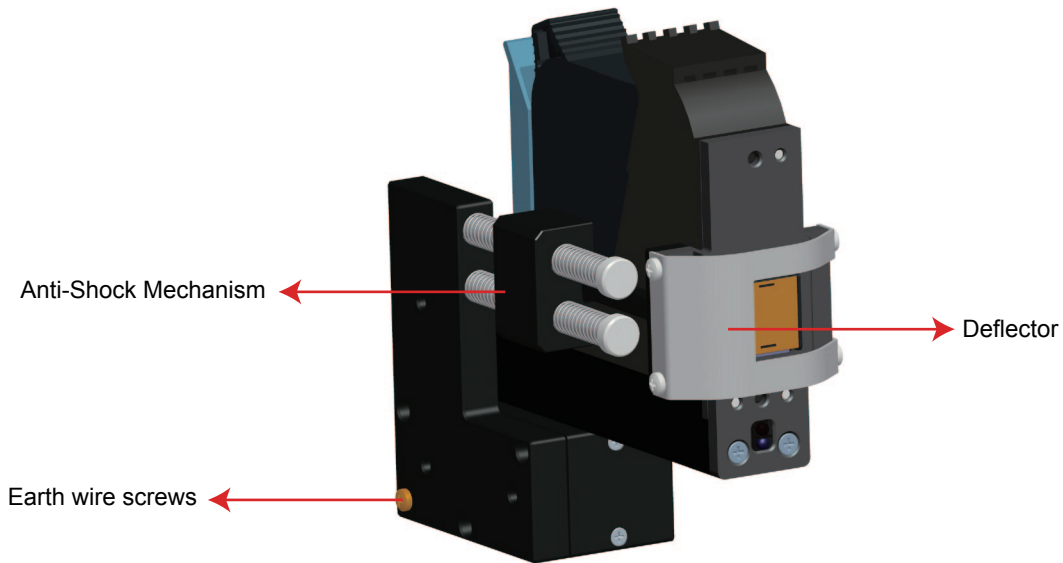
# Uneven Surface Printing Inkjet Printer Installation Manual



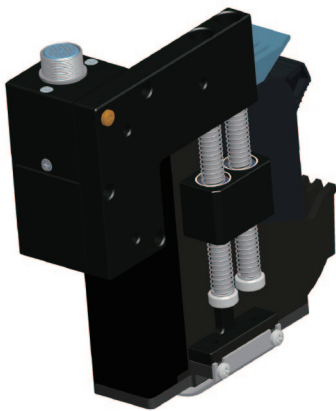
\*Suitable for double printheads and multi-printheads uneven surface printing inkjet printers.



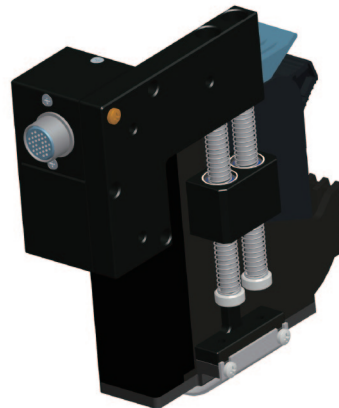
### 3.1 Printhead Introduction



### 3.2 Printheads Adjustment

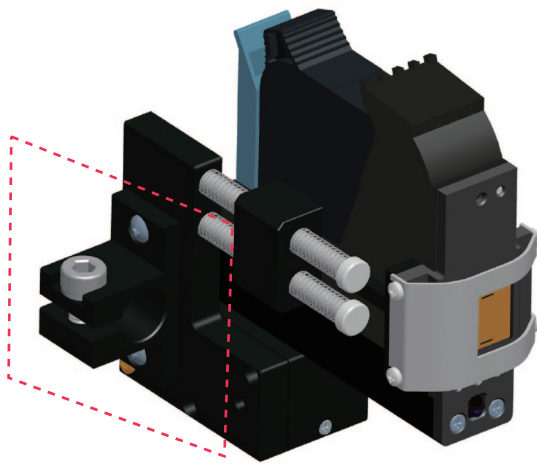


Aviation connector default status  
Note: for easy operation, installation direction can be adjusted.

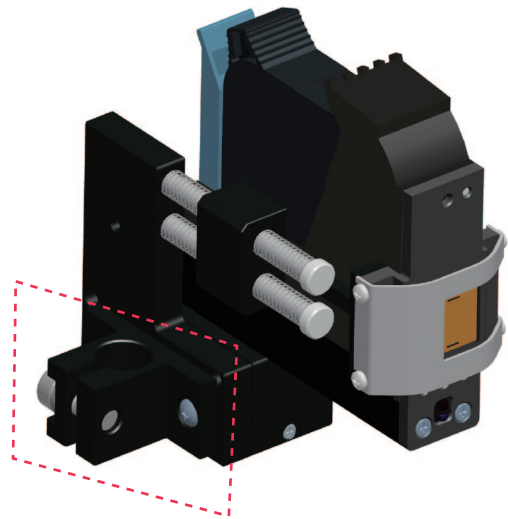


Remove the 3 screws on the connector, take off the plate, place it into another direction as shown on the picture, then fasten the screws back.  
Connector Adjustment Finish

### 3.3 Pole Holder Adjustment for side/down printing

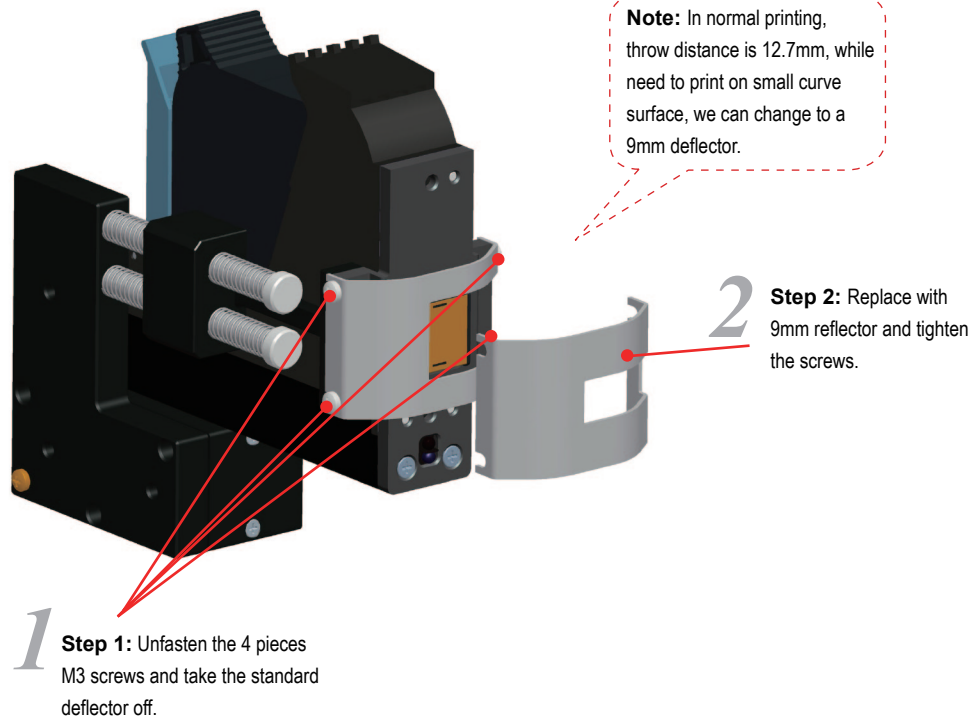


Side Printing



Down Printing

### 3.4 Set up printer, deflector, and anti-shock mechanism

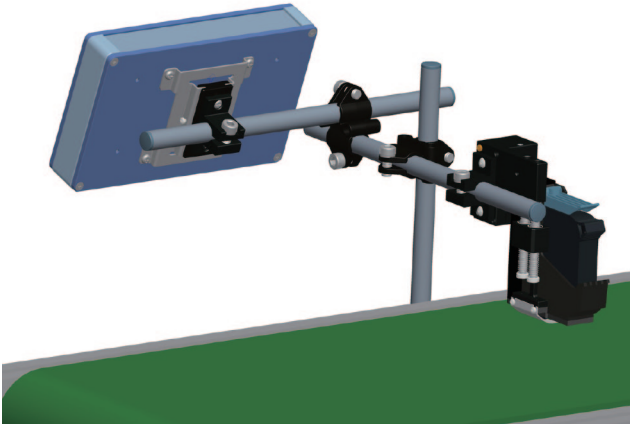


---

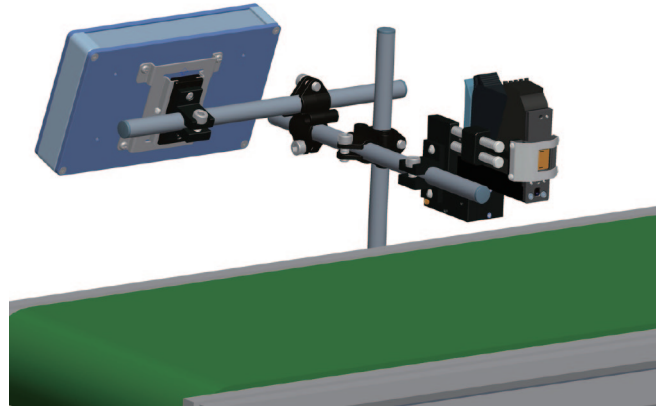
## 3.5 Bracket Installation

Installation details, please refer to the installation video in the USB disk.

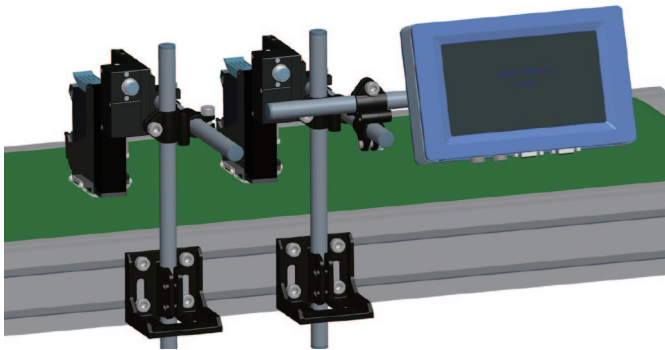
**Down Printing of Single Printhead**



**Side Printing of Single Printhead**



**Separate Printheads Installation**



---

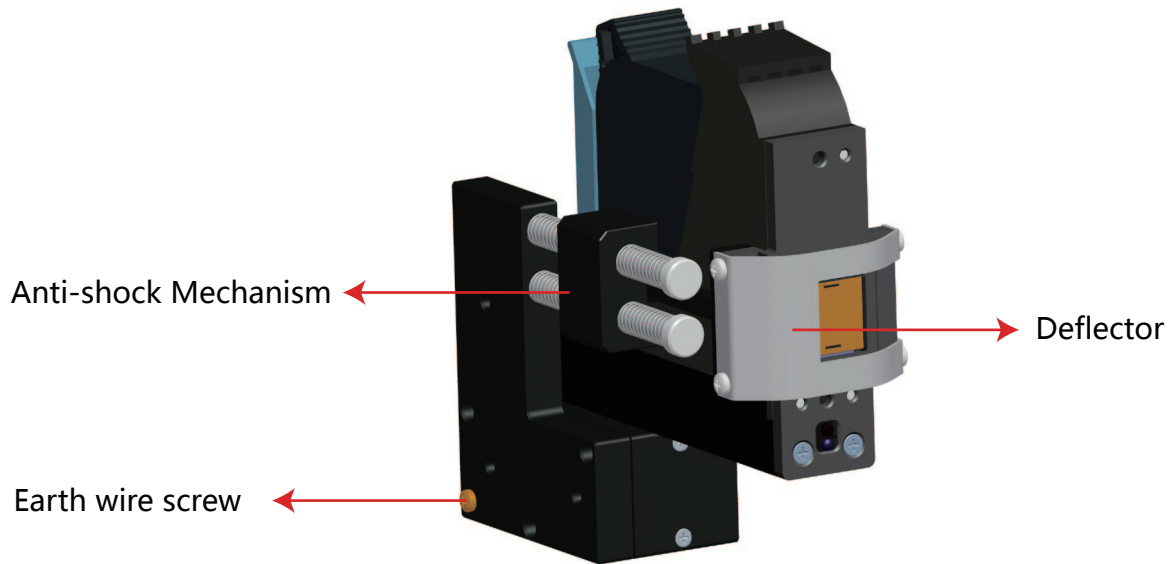
## **Chapter4**

### ***Egg Printing Inkjet Printer Installation Manual***



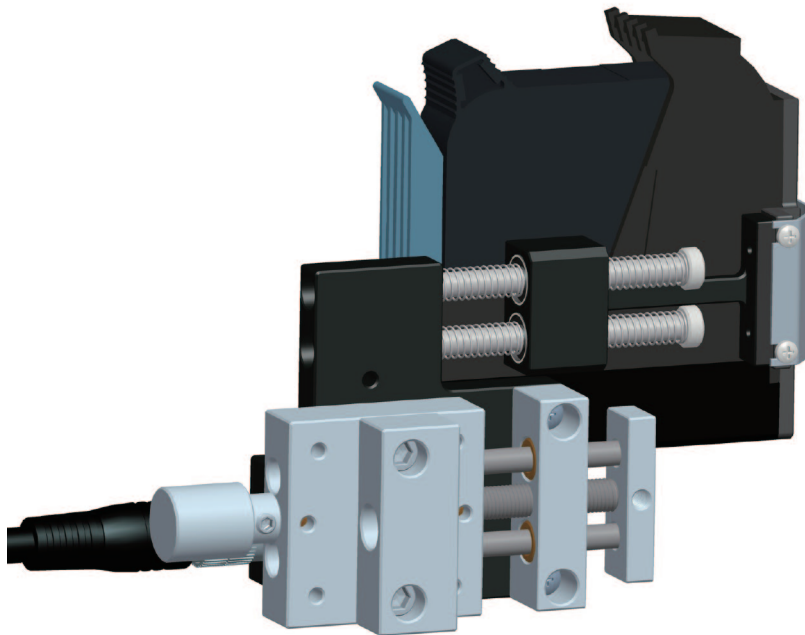
---

## 4.1 Printhead Introduction



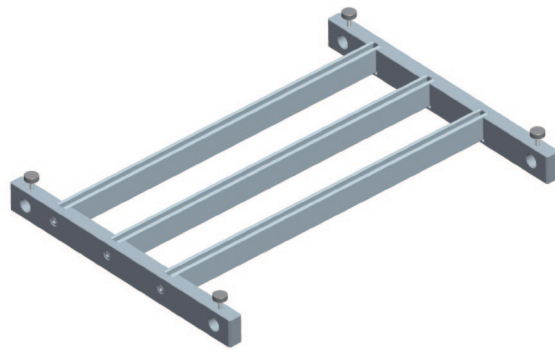
## 4.2 Printhead Adjustment Module Installation

Fix the adjustment module onto the anti-shock mechanism (as below):

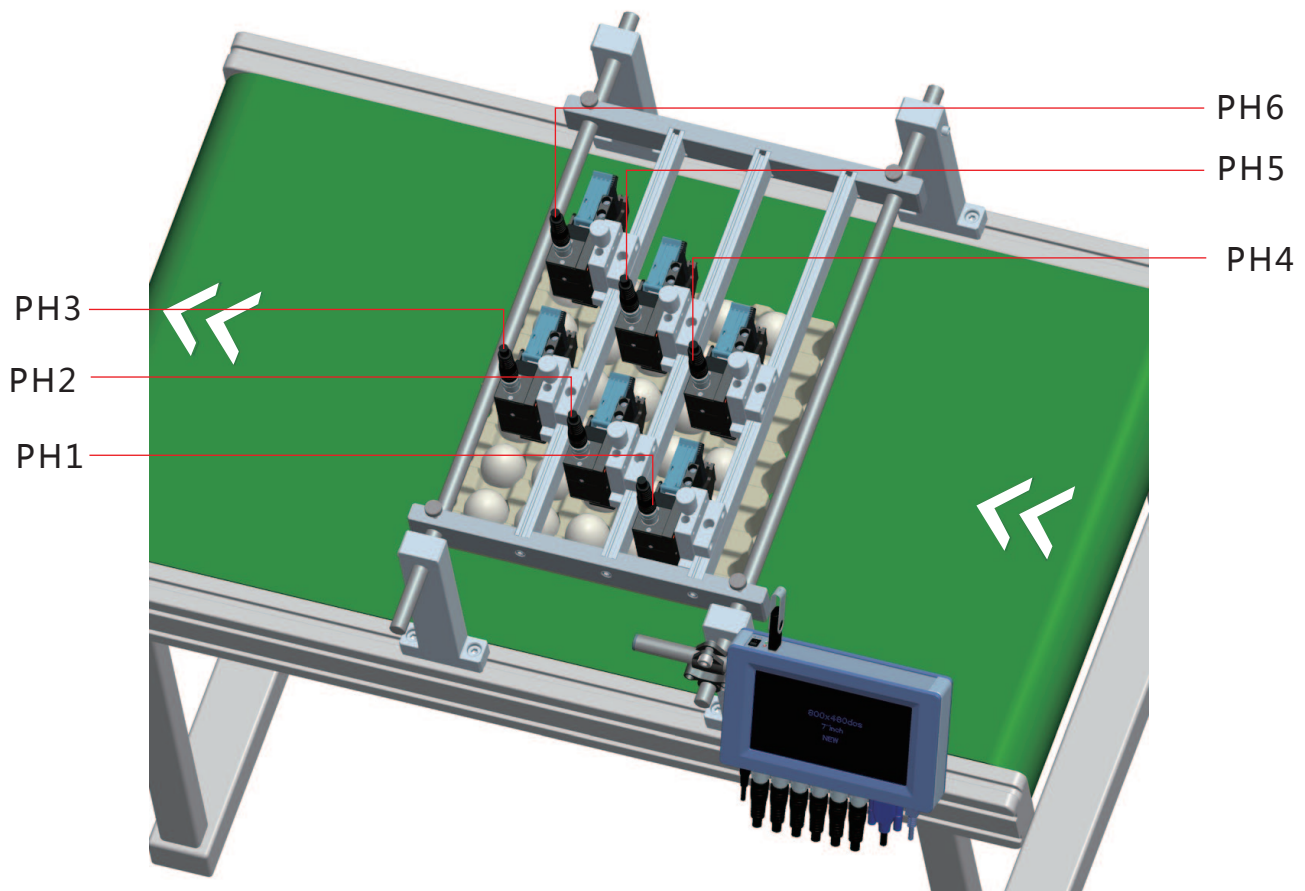


Note: The adjustment module enable to adjust the printheads' position vertically, scope is 0-25mm.

## 4.3 Bracket Installation



1. After assemble the bracket as in above picture, fix it onto the production line.



2. Install the adjustment modules to the printheads firstly, then fix the printheads onto the bracket by sequence, then the controller (as in above picture);

According to the PH number connect the printhead and the controller.

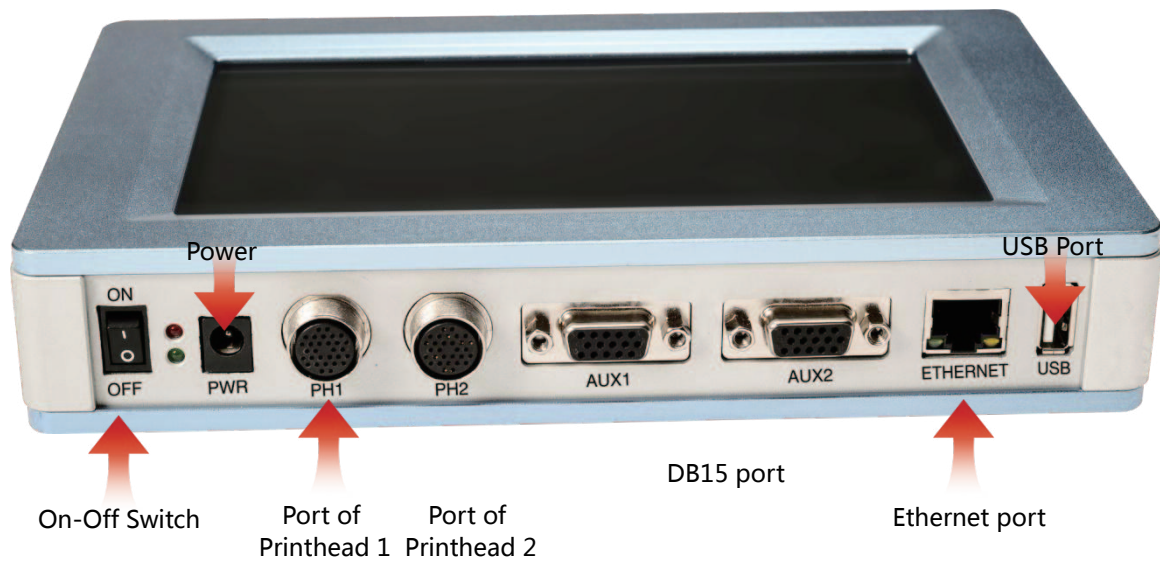
Note: 1) User can adjust teh printheads' position slightly by the adjustment module according to the eggs' size.

---

## ***Chapter 5 Main Unit Introduction***



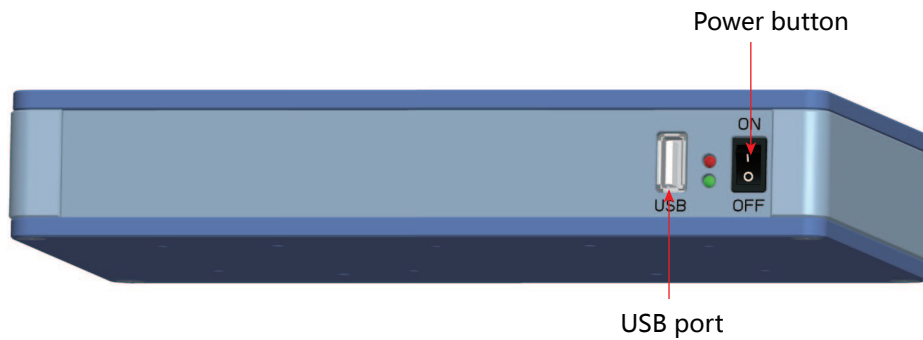
## 5.1 Double printheads Printer



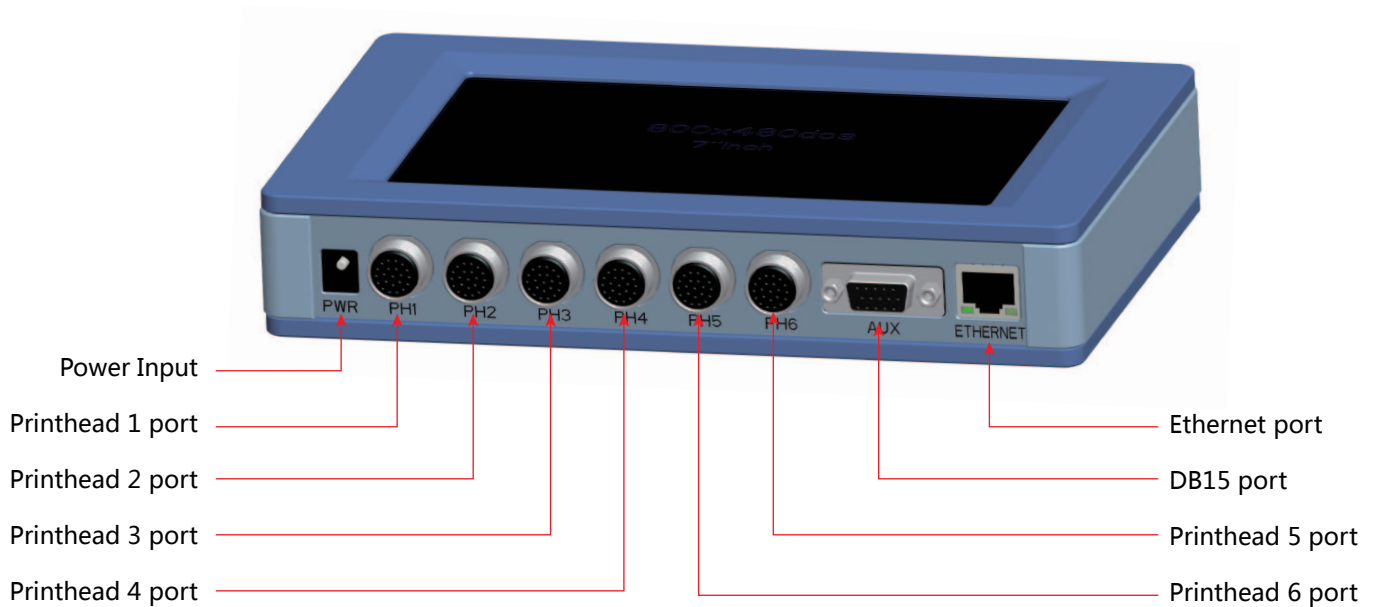
- Note: 1) DB15 port: can connect with external photocell, encoder, alarm kit or external data source.  
2) Ethernet port: can connect with Ethernet cable or external data source.  
3) USB port: can connect with USB or external data source.



## 5.2 Controller introduction of the multi-printheads printer



**Controller top**



**Controller bottom**

Note: 1) DB15 port: can connect to external photocell, encoder, alarm kit or other external data source.

2) Ethernet port: can connect with ethernet cable or other data source.

3) USB port: can connect to USB disk or other data source.

## 5.3 Technical Specifications

### A. Performance Values

Item	Specifications	Note
Technical source	HP TIJ 2.5 Thermal Ink Jet technology	
Dimension	Controller ( H*W*D ) : 210*135*37mm/8.3*5.3*1.46inch Normal printhead : 126*100*31mm/4.9*3.9*1.2inch Stretchable printhead : 142*133*55mm/5.6*5.2*2.15inch	
Power supply	AC 90V-240V/50-60HZ	
Print heights	Double printheads printer : 1-25.4mm Multi printheads printer : 1~76.2mm Uneven surface & Egg printer : 1-12.7mm	
Print speed	0~60m/min (300DPI) 0~30m/min (600DPI)	
Resolution	50~600DPI	
Print application	Barcode, alphabetic, numeric, image logos, date/time, expiration date, shift code, counter, lot-box code	
Connection Ports	1) Ethernet: 100Mb/s, Synchronized control of multiple devices via PC; 2) USB2.0: Support U-Disk; 3) DB15: For external devices like photocell, synchronizer or alarm kit connection;	
Interface	1) 7 inch 800 *480 color LCD touch screen; 2) With touch screen interface operation, easy to use; 3) Printer can work separately without PC software;	
Ink management	1. Automatically recognizes ink types, and identifies optimum printing parameters for each ink type; 2. Guarantees the using of genuine original HP ink; 3. Automatic measuring system for the usage of ink.	
Mounting	Standard side and downside printing assembly, customers can fix it flexibly;	
Product Certification	CE, FCC.	
Environment requirement	1. Working environment: -10°C~ +45°C; 10%-85%RH; 2. Storage environment: -25°C~ +55°C; 10%-90%RH.	